

# THE ANATOMY OF A DISTANCE-TIME GRAPH

A STRAIGHT LINE MEANS *CONSTANT SPEED*.

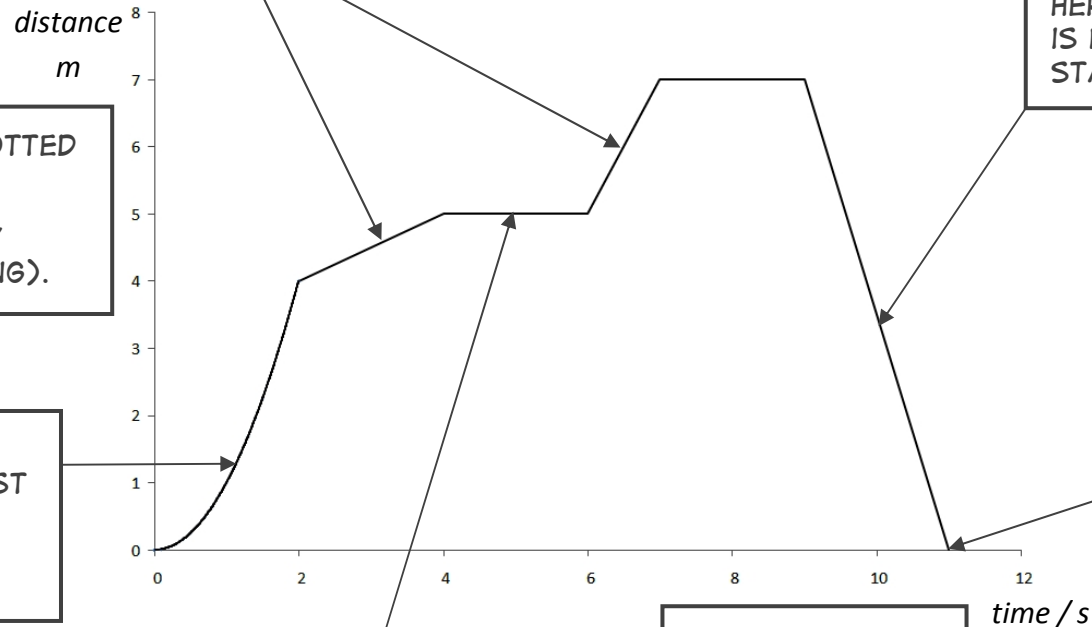
WE CAN FIND THE SPEED BY FINDING THE GRADIENT. A STEEPER LINE MEANS A FASTER SPEED.

A LINE SLOPING DOWN MEANS THE BODY IS *COMING TOWARDS* THE OBSERVER.

HERE, THAT MEANS IT IS RETURNING TO THE STARTING POINT.

DISTANCE IS PLOTTED ON THE Y AXIS.  
(DISTANCE AWAY FROM SOMETHING).

HERE THE LINE IS GETTING STEEPER, SO THE BODY MUST BE SPEEDING UP.  
IT IS *ACCELERATING*.



A HORIZONTAL LINE MEANS THE BODY IS *STATIONARY*. IT IS NOT MOVING.  
(THE GRADIENT IS ZERO).

TIME IS PLOTTED ON THE X AXIS.

THE BODY HAS ENDED AT DISTANCE ZERO, SO IT HAS RETURNED TO ITS STARTING POINT.