

Darwin's Evolution REVIEW

CHAPTERS 10

Question 1

A change of an organism over time is also called _____.



ANSWER 1

Evolution

Question 2

Any variation that makes an organism better suited to its environment so it can survive is called a what?



Answer 2

Adaptation

Question 3

What theory about the earth did Charles Lyell's come up with?



Answer 3

Uniformitarianism

Changes to the earth have stayed the same throughout time.

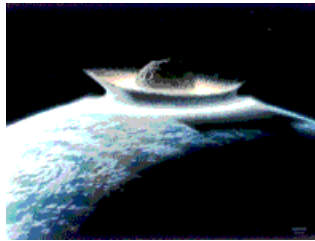
Question 4

The Geological Theory that states the Earth's surface was created as a result of sudden spectacular events is called:



Answer 4

Catastrophism



Question 5

Darwin's voyage led him to propose a revolutionary hypothesis about life. What is the name of the ship?



Answer 5

Beagle

Question 6

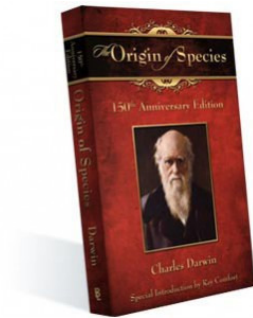


The book in which Darwin first outlined his theory of evolution was titled:



ANSWER 6

On the Origin of Species



Question 7

What is the names of the Islands where Darwin observed differences in beaks in finches?



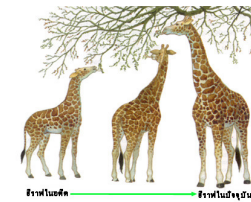
ANSWER 7

Galápagos Islands



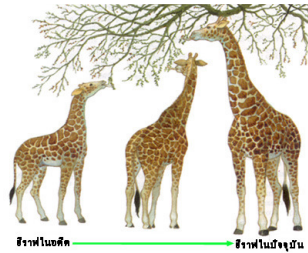
Question 8

Which is a major concept included in Lamarck's theory of evolution?



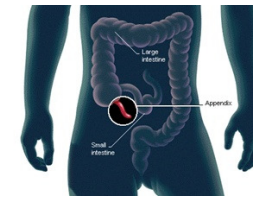
ANSWER 8

Body structure can change according to the actions of the organism.



Question 9

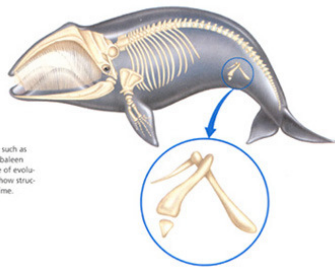
The human appendix is an example of



ANSWER 9

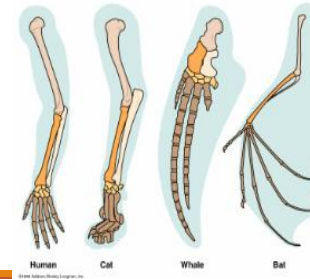
Vestigial Structure

Figure 15.8
Vestigial structures, such as pelvic bones in the baleen whale, are evidence of evolution because they show structural change over time.



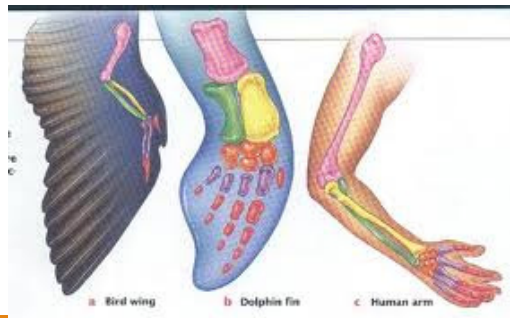
Question 10

The image illustrates what evolutionary concept?



ANSWER 10

Homologous structures



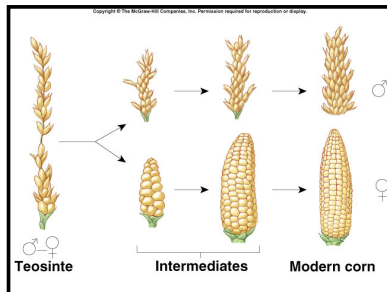
Question 11

The dog breeds we have today were developed through:



ANSWER 11

Artificial selection



Question 12

Walrus live in the Arctic and have a thick fat layer. The ancestors of modern-day walrus might not have had a thick layer of fat. Over time, the walrus have changed. According to evolution by natural selection, what is the MOST likely reason for such a change?



ANSWER 12

The walrus that had thicker fat layers were more adapted to survive and reproduce.



Question 13

A group of populations that can interbreed to produce viable offspring

ANSWER 13

Species



Question 14

The ability of that individual to survive to reproductive is called its _____.



ANSWER 14

Fitness



Question 15

The economist Thomas Malthus suggested that

ANSWER 15

There would soon be insufficient food for the growing human population.



Question 16

In addition to observing living organisms, Darwin studied the preserved remains of ancient organisms called _____.



ANSWER 16

Fossils



Question 17

Darwin referred to the “survival of the fittest” as _____.



ANSWER 17

Natural Selection



Question 18

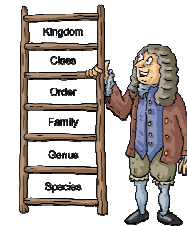
The idea that each living species has descended with changes from other species over time is called:

Answer 19

The Environment

Question 20

What scientist came up with the classification system?

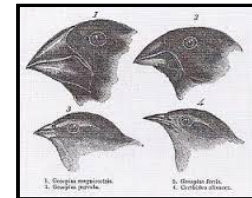


Answer 20

Linnaeus

Question 21

_____ is a
difference in a
physical trait.



Answer 21

Variation